

## RANGE COMPOSITION

ZANUSSI Professional easySteam blends tradition with the latest technological research in order to satisfy the creativity and working requirements of today's professional kitchen. The easySteam range offers a choice of different models, providing a high degree of automation and an extensive range of accessories. The easySteam combis are designed to form complete cook&chill systems together with easyChill blast chillers/freezers, therefore, any installation can be tailored to meet the needs of the caterer.

The easySteam combis detailed are 20 GN 2/1 gas models.



# easySteam OVENS

## COMBI LW 20 GN 2/1-GAS

**ZANUSSI**  
PROFESSIONAL

## FUNCTIONAL AND CONSTRUCTION FEATURES

◆ Convection cycle (max. 300 °C): ideal for meat to be cooked without humidity and "au gratin". In conjunction with the half-power function for all kinds of pastry cooking.

◆ Steam cycle (max. 130 °C): for products that can be cooked in water. Steam cooking respects the original properties of food and reduces weight loss.

◆ Combi cycle (max. 250°C): ideal for most kinds of cooking. Impressive reduction of cooking times and food shrinkage. The humidity generated by the food and the steam generator is automatically controlled by the By-pass technology for saving water and energy.

◆ easySteam ovens can cook by controlling either the cooking time or the product's core temperature through a single-sensor probe.

◆ Regeneration cycle: it produces the best humidity conditions for quickly heating the products to be regenerated (max. 250°C) on the plate.

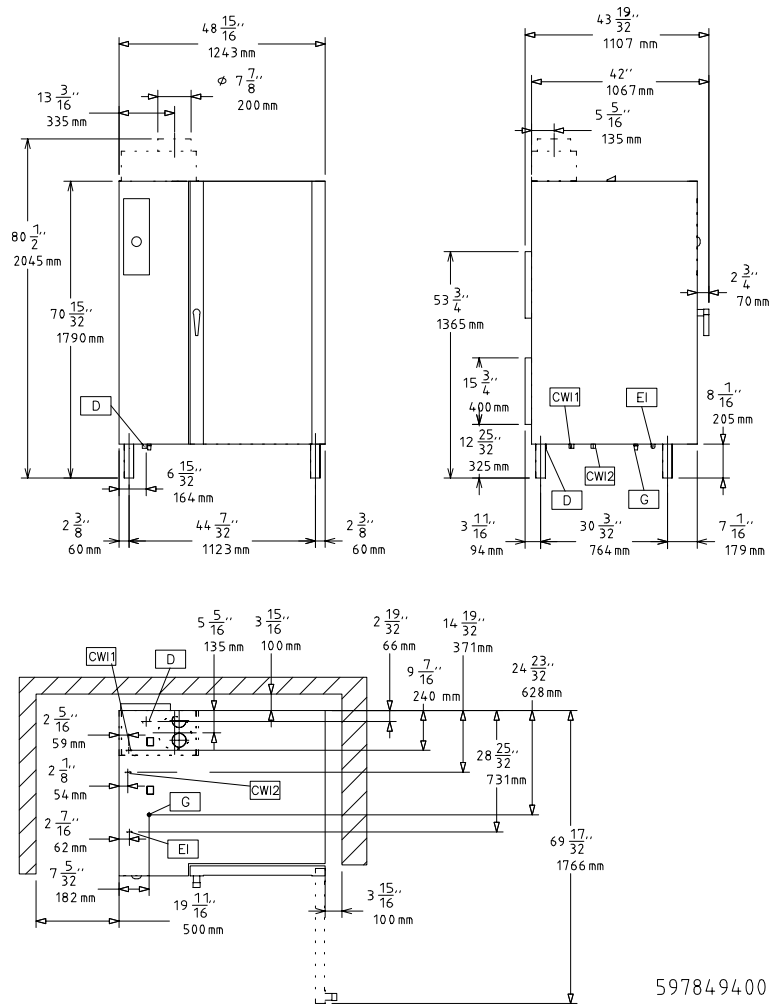
TECHNICAL DATA		
CHARACTERISTICS	MODELS	
	FCZ202GBG 238505	FCZ202GBD 238515
Power supply	Gas	Gas
Gas	Natural Gas	LPG
Number of grids	20	20
Runners pitch - mm	63	63
Cooking cycles - °C		
air-convection	300	300
steam	130	130
combi	250	250
Convection	●	●
Steaming	●	●
Convection/steaming	●	●
Cook&hold	●	●
Regeneration	●	●
Low temp steaming	●	●
Two-speed fan	●	●
Meat probe	●	●
Semi-automatic cleaning cycle	●	●
External dimensions - mm		
width	1243	1243
depth	1107	1107
height	1795	1795
Internal dimensions - mm		
width	933	933
depth	830	830
height	1450	1450
Power - kW		
boiler	55	55
cooking chamber	55	55
gas	95	95
auxiliary	2	2
Net weight - kg.	414	414
Supply voltage	230 V, 1N, 50/60	230 V, 1N, 50/60
INCLUDED ACCESSORIES		
CONTROL PANEL FILTER-20 GN2/1 OVENS-LW	1	1
TROLLEY TRAY RACK F. 20X2/1GN,63MM PITCH	1	1

- ◆ Fan speeds: full, half speed (for delicate cooking such as for baking cakes) and HOLD (pulse ventilation for baking and low temperature cooking). The "HOLD utility" is also perfect for keeping food warm at the end of the cooking cycle.
- ◆ Low power cycle: for delicate cooking such as for baking cakes.
- ◆ Eco-delta: the temperature inside the cooking cell is higher than the temperature of the food and rises accordingly.
- ◆ Exhaust valve electronically controlled to evacuate the humidity excess.
- ◆ Semi-automatic cleaning cycle.
- ◆ Quick cooling: useful when passing to a type of cooking that requires a lower temperature than the previous one. It works automatically and manually.
- ◆ Manual injection of water in the cell.
- ◆ Automatic steam generator water draining with an automatic scale diagnosis system.
- ◆ HACCP management as standard: it allows the recording of the cooking programme according to H.A.C.C.P. standard (Hazard Analysis and Critical Control Points).
- ◆ By-pass technology: controls the humidity degree of the oven atmosphere in combi and regeneration cycles. It prevents water and energy waste.
- ◆ Perfect evenness: blows fresh air from outside through the bi-functional fan, which pulls the air in from the backside of the oven, after it is pre-heated and therefore guaranteeing the evenness of the cooking process.
- ◆ Single-sensor food probe.
- ◆ The cell and steam generator gas burners: GASTEC certification on high efficiency and low emissions. High efficiency cell and steam generator heat exchangers.
- ◆ Stainless steel 304 throughout, with seamless joints in the cooking cell.
- ◆ Height adjustable legs.
- ◆ Double thermo-glazed door equipped with drip pans to catch condensate and prevent slippery floor for maximum security and four holding positions allowing easier loading and unloading manoeuvres.
- ◆ Halogen lighting in the cooking cell.
- ◆ Access to main components from the front panel.
- ◆ Automatic scale diagnosis system in the steam generator to detect the presence of scale build-up.
- ◆ IPX5 water protection.
- ◆ easySteam ovens meet GASTEC safety requirements.

OPTIONAL ACCESSORIES		
ACCESSORIES	MODELS	
	FCZ202GBG 238505	FCZ202GBD 238515
1 GRID GN1/1 FOR 8 WHOLE CHICKENS(1.2KG)	922266	922266
2 FAT FILTERS FOR 20X1/1 & 2/1 OVEN	922179	922179
2 FRYING BASKETS FOR OVENS	922239	922239
2 GRIDS GN 1/1 FOR CHICKENS (8 PER GRID)	922036	922036
AUTOMATIC WATER SOFTENER FOR OVENS	921305	921305
BAKING TRAY(400X600X20)4 EDGES-ALUMINIUM	922191	922191
BAKING TRAY(400X600X20)4 EDGES-PERF.ALUM	922190	922190
BANQ.TROLLEY-92PLATES 85MM PITCH-20GN2/1	922055	922055
CONTROL PANEL FILTER-20 GN2/1 OVENS-LW	922249	922249
DOOR SHIELD 20 1/1-PRE-HEAT W/O TROLLEY	922094	922094
DOOR SHIELD 20 2/1-PRE-HEAT W/O TROLLEY	922095	922095
EXTERNAL SIDE SPRAY UNIT	922171	922171
FLUE CONDENSER FOR GAS OVENS-LW	922235	922235
FRYING GRIDDLE GN 1/1 FOR OVENS	922215	922215
FRYING GRIDDLE GN 2/3 FOR OVENS	922284	922284
HEAT SHIELD FOR 20 GN 2/1 OVENS	922242	922242
KIT HACCP EKIS	922166	922166
KIT INTEGRATED HACCP FOR OVENS	922275	922275
KIT TO CONVERT FROM LPG TO NATURAL GAS		922278
KIT TO CONVERT FROM NATURAL GAS TO LPG	922277	
NON-STICK U-PAN GN 1/1 H=20 MM	922090	922090
NON-STICK U-PAN GN 1/1 H=40 MM	922091	922091
NON-STICK U-PAN GN 1/1 H=65 MM	922092	922092
NON-STICK U-PAN GN 2/3 H=20 MM	922285	922285
OVEN GRILL (ALUMINIUM) GN 1/1	922093	922093
PAIR OF 1/1GN AISI 304 S/S GRIDS	922017	922017
PAIR OF 2/1 GN AISI 304 S/S GRIDS	922175	922175
PASTRY TROLLEY 16(400X600)80MM-20 2/1 LW	922069	922069
RESIN SANITIZER FOR WATER SOFTENER	921306	921306
THERMAL COVER FOR 20 GN 2/1-LW	922049	922049
TRAY(400X600X38)5 ROWS-PERF.ALUM/SILICON	922189	922189
TROLLEY TRAY RACK F. 20X2/1GN,63MM PITCH	922044	922044
TROLLEY TRAY RACK F. 20X2/1GN,80MM PITCH	922046	922046
WATER FILTER FOR 20 2/1 OVENS 1.8 L/MIN.	922104	922104



www.zanussiprofessional.com



**LEGEND**

	FCZ202GBG 238505	FCZ202GBD 238515
CWI - Cold water inlet	3/4"	3/4"
D - Water drain	2"	2"
EI - Electrical connection	230 V, 1N, 50/60	230 V, 1N, 50/60
G - Gas connection	1"	1"
WIC - Cooling water inlet	3/4"	3/4"



www.zanussiprofessional.com